



MUKKTI
CULTURAL HUB

An initiative by
Mukkti Foundation

MCH E-BROCHURE

A place where your stories
come to life.



MUKKTI

This opulent expanse which is strategically located at the heart of Versova is surrounded by tranquility and boasts of a 325 seater state-of-the-art auditorium providing superlative amenities offering an enriching experience. Staying true to our beliefs of inclusivity, the auditorium's facilities are wheelchair friendly for artists and the audiences alike.



2nd & 3rd
Floor B wing



300+ seats
Capacity



55ft x 24ft
Stage Size

FACILITIES

- Strategically placed ramps for easy accessibility.
- 5 individual green rooms.
- Contemporary and spacious stage with built-in hydraulic system according to international standards.
- State-of-the-art audio-visual technology
- Collapsible seats for workshops
- Ample parking around the premises.



HOUSE OF DANCE

A contemporary space which personifies the saying “Dance is the hidden language of the soul.” ‘House of Dance’ is a fully furnished studio catering to all your needs. You can dance till you drop, sway, jive, pop, pirouette and even practice some aerial acts, ‘cause we’ve got the place hooked up! Feel free to join our array of classes or rent the space for your dance rehearsals.



1st Floor
A wing



1400 sq. ft.
Area



42ft x 34ft
Dimension

FACILITIES

- General lighting with AC
- VIP Lounge + Male & Female Changing rooms
- Designated private toilets on the same level
- Black out curtains for mirrors
- Add ons for aerials, gymnastics & martial arts
- Dedicated lobby space for FnB arrangements
- Foam flooring



NIRVANA

A capacious arena (big enough to fit a mini theatre) to let loose when you wish to jump, run, dance and shout your heart out! It's the perfect space to hone your performance skills, bringing you an inch closer to perfection with likeminded souls who share the same passion. 'Nirvana' is equipped with abundant lighting, a robust audio system and a modern cooling system.



B wing



2300 sq. ft.
Area



45ft x 45ft
Dimension

FACILITIES

- Strategically placed ramps for easy accessibility.
- Robust sound system apt for all types of rehearsals.
- A 750 sq.ft. lobby foyer attached to Nirvana for FnB and social gatherings.
- 2 elevators for public access.
- Designated private toilets.



AZADI

Fancy an intimate event beneath the stars or a rendezvous below the soft rays of the sun. 'Azadi' is an elegant 1000 sq.ft. space exclusively designed for when your thoughts crave for some fresh air. It is the ideal space to host semi-formal events, open mic events and a myriad of other events under the stars and sky.



B wing



1000 sq. ft.
Area



45ft x 21ft
Dimension

FACILITIES

- Strategically placed ramps for easy accessibility.
- Designated private toilets on level 1.
- Electric points for plug and play.
- General lighting at night.
- 2 elevators for public access.
- Ample parking around the premises.



PANKH

This 680 sq.ft. plush and elegant space is ideal for brainstorming business ideas, conducting pottery classes, organizing conferences and meetings or simply inviting people to have an open discussion on your next big idea. True to its name, 'Pankh's' interiors are designed to give wings to all sorts of private events that you would like to organize.



2nd Floor
A wing



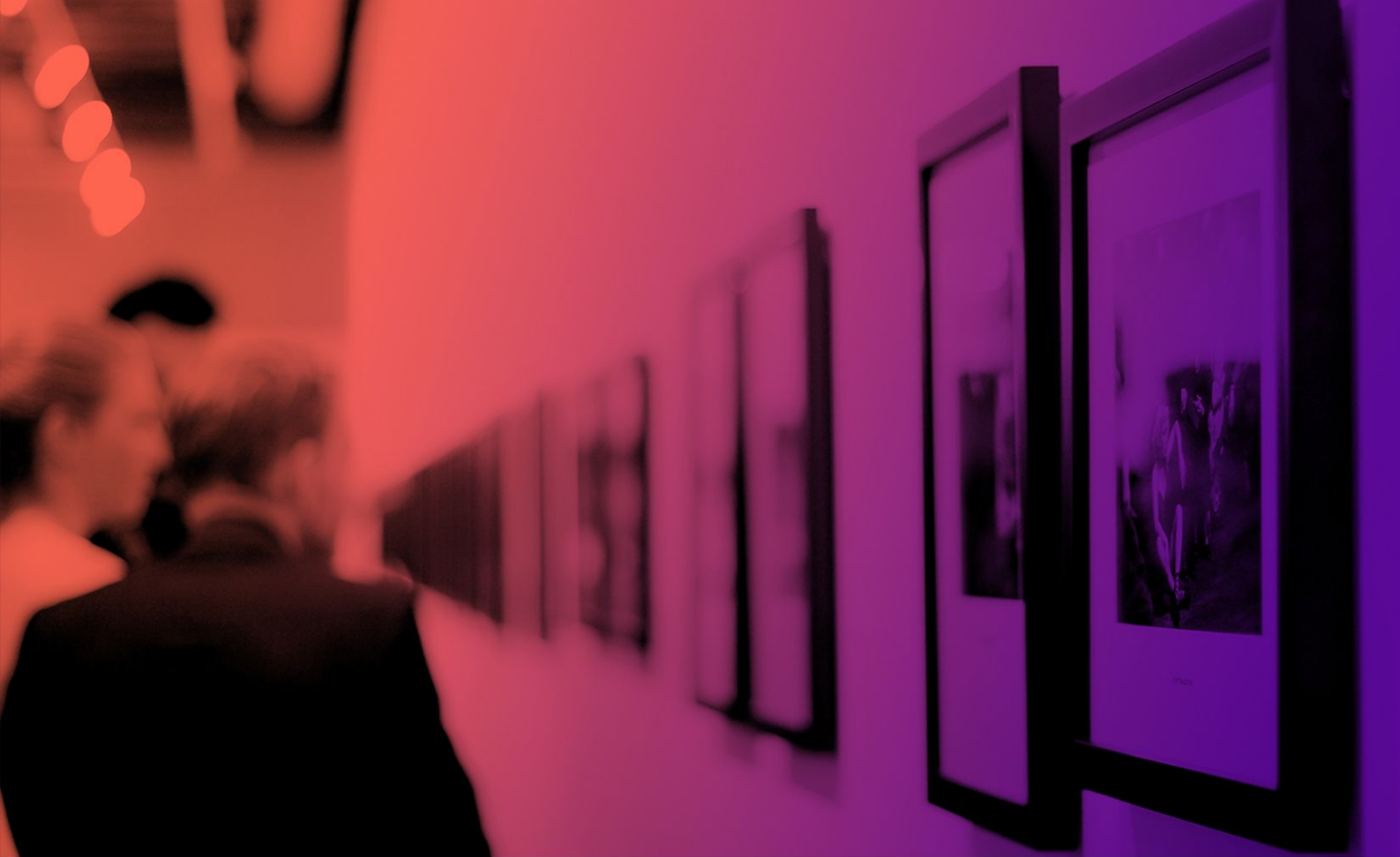
680 sq. ft.
Area



34ft x 20ft
Dimension

FACILITIES

- Panoramic view
- General lighting (white & yellow) with AC
- Designated private toilets on same level
- Black out curtains available
- Elevators for public access



RANG

Creativity is all about inventing, experimenting taking risks, breaking rules and making mistakes (not to mention, having fun!). Let us cut you some slack, by carefully selecting your exquisite pieces of art, paintings, sculptures and even modern immersive art and exhibit it at 'Rang' – a luminous and expansive 2000 sq.ft. space which is exclusively designed for all your artistic needs.



B wing



2000 sq. ft.
Usable Area



54ft x 44ft
Dimension

FACILITIES

- Strategically placed ramps for easy accessibility.
- Impressive lofty ceiling.
- Designated private toilets on the same level.
- A variety of luminous rigging opportunities.
- Spacious lobby to display a large variety of exhibits.



MUKKTI
A SMITA THACKERAY FOUNDATION



Booking Time : 10am to 7pm

Hub Time : 9 am to 10.30 pm

CONTACT US



Plot no.141 – A, 8th Floor, Model Town,
Four Bungalow, Andheri (W),
Mumbai – 400053



099205 55550 / 022-26355533



info@mukkticulturalhub.com



www.mukkticulturalhub.com



09920555551



hod@mukkticulturalhub.com



@mukkticulturalhub



@houseofdanceofficial